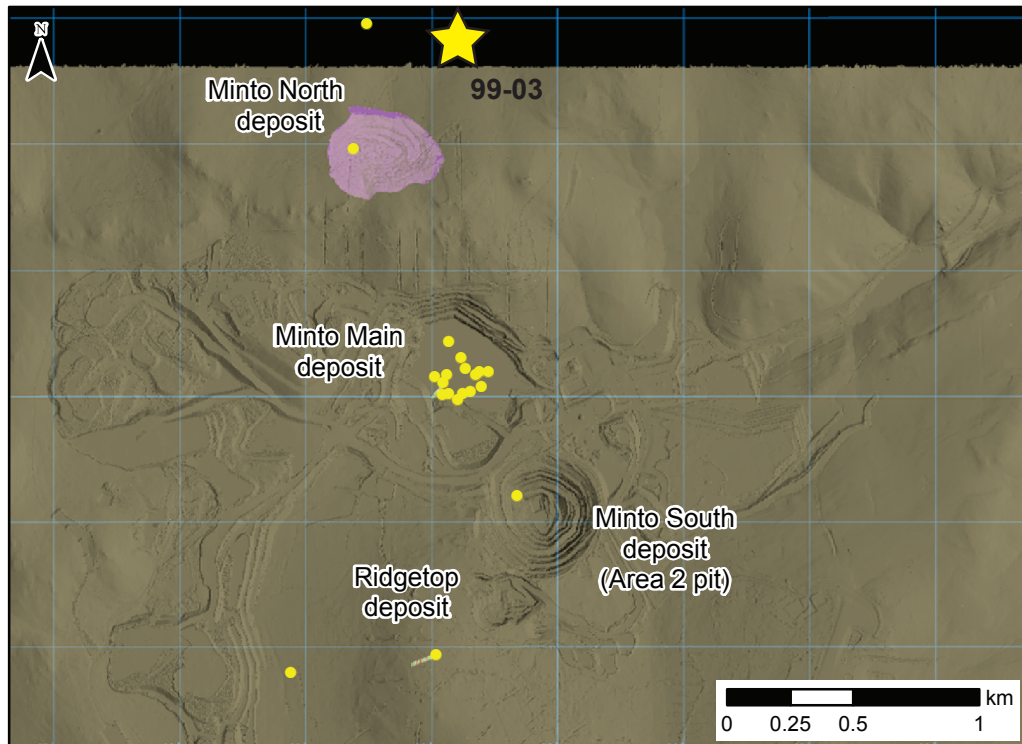


Minto deposit (Yukon MINFILE 115I 021, 022)

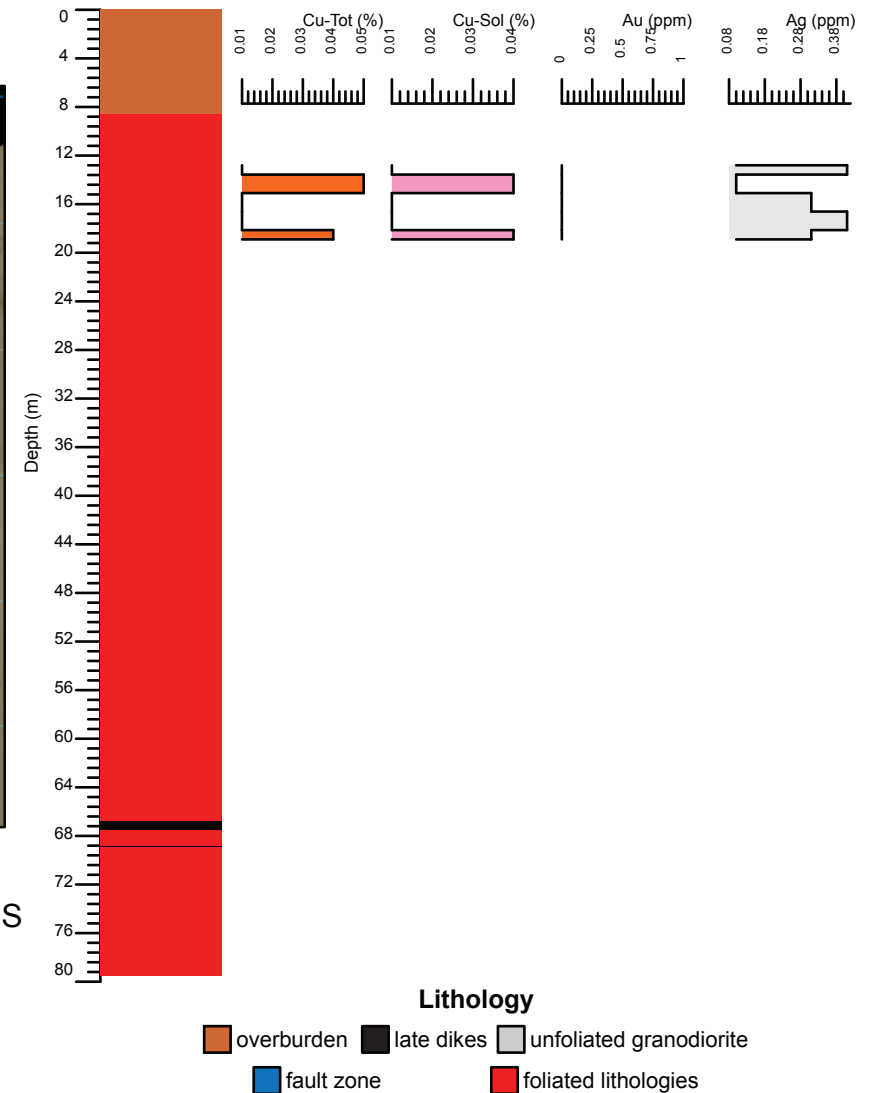
Drill Hole: 99-03, Exploration north of Minto North deposit

Area	Hole No.	Azimuth	Dip	Length (m)	Collar coordinates (NAD83, Zn 8)
Exploration north of Minto North	99-03	0	-90	79.55	384622mE, 6946401mN



Above: Orthophoto of Minto area. Collar location of 99-03 shown by yellow star, yellow circles show collar locations of other drill holes in YGS collection.

Right: Simplified strip log with selected assays.



Hole	From (m)	To (m)	Interval (m)	Sample	Cu (%)	Cu-Sol (%)	Au (ppm)	Ag (ppm)
99-03	12.8	14.33	1.53	21729	0.0	0.0	0.0	0.4
99-03	14.33	15.85	1.52	21730	0.1	0.0	0.0	0.1
99-03	15.85	17.37	1.52	21731	0.0	0.0	0.0	0.3
99-03	17.37	18.9	1.53	21732	0.0	0.0	0.0	0.4
99-03	18.9	20.42	1.52	21733	0.0	0.0	0.0	0.3

Above: Selected assays from 99-03. Cu - Tot = sulphide and non-sulphide copper, Cu-Sol = non-sulphide copper

Note: a section isn't provided because this is an exploration hole and there is not enough geologic information nearby to create a meaningful section.